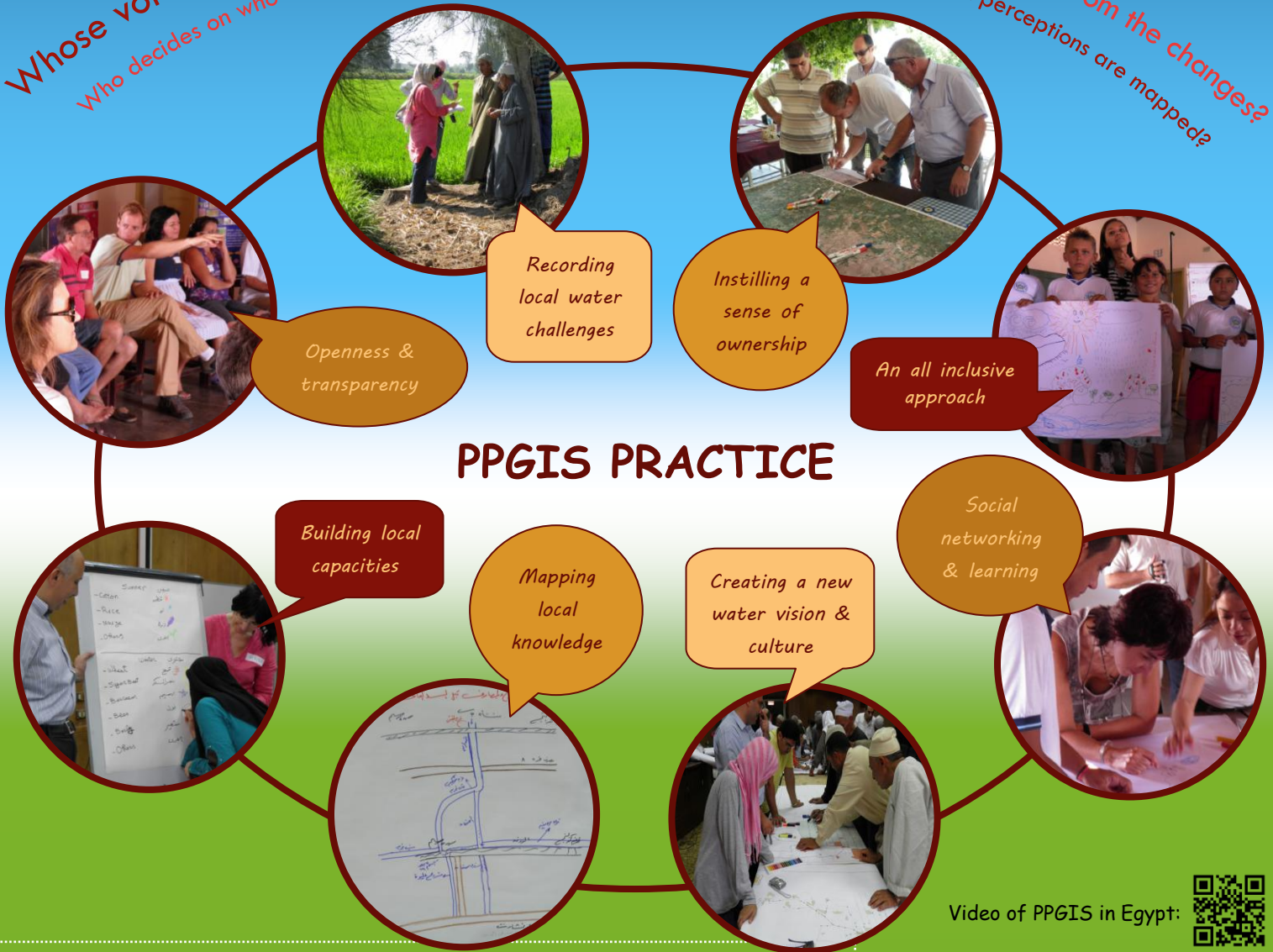


Public Participatory Geographic Information Systems (PPGIS)

- ✦ Uses the power of maps to communicate effectively
- ✦ Empowers ordinary people in adding value and authority to their sense and perception of where they live and work
- ✦ Provides an opportunity to collectively map the past into the present and use local knowledge to transform lives and landscapes

Whose voice counts?
Who decides on who should participate?

Who benefits from the changes?
Whose stories & perceptions are mapped?



Video of PPGIS in Egypt:



The SIRIUS GMES project

SIRIUS (Sustainable Irrigation water management and River-basin governance: Implementing User-driven Services) is a three-year R&D project, funded under the European Community's Seventh Framework Programme (FP7) within the context of the Global Monitoring for Environment and Security (GMES) initiative.

SIRIUS has developed a toolset, designed to weave the local community dimension alongside the scientific and technical applications for efficient water resource management services in support of food security in water-scarce environments. Local community mapping together with other tools, such as SPIDER*, are used to facilitate discussion among farmers, water user associations, local governments and other stakeholders, to ensure equitable water sharing & efficient water use in agriculture.

*SPIDER

(System of Participatory Information, Decision-support, and Expert knowledge for River-basin governance) is a spatial online data analysis and visualization system used in SIRIUS to determine the crop water consumption.



UCLM, Spain (Coordinator)
Universidad de Castilla – La Mancha,
Instituto de Desarrollo Regional

FPV, Spain
Universitat Politècnica de València
Diputació de Alicante



ASTRIUM, United Kingdom
ASTRIUM Geo-Information Services,
trading as Infoterra Limited



IRMCo, Malta
Integrated Resources Management (IRM) Company Limited



INPE, Brazil
Instituto Nacional de Pesquisas Espaciais
FUNCEME, Brazil
Fundação Cearense de Meteorologia e Recursos Hídricos



SMHI, Sweden
Sveriges Meteorologiska och Hydrologiska Institut



IRD-Cesbio, France
Institut de Recherche pour le Développement



INEA, Italy
Istituto Nazionale di Economia Agraria
Ariespace, Italy
Ariespace SRL



BU-UVCE, India
Bangalore University



EA-TEK, Turkey
EA-TEK Uluslararası Arastırma Gelistirme
Mühendislik ve Azim ve Danışmanlık Limited Şirketi



NWRC-SRU, Egypt
Ministry of Water Resources and Irrigation



FFCT/UNL, Portugal
Fundação da Faculdade de Ciências e Tecnologia
da Universidade Nova de Lisboa



ColPos, Mexico
Colegio de Postgraduados
SEISSA, Mexico
Servicios de Estudios en Ingeniería y
Sistemas S.A. de C.V.



INCDF-ISPIF, Romania
Institutul National de Cercetare – Dezvoltare
Pentru Imbunatatirea Fundiului – I.N.C.D.I.F. “ISPIF”
Bucuresti
IAE, Romania
Institute of Agricultural Economics

RTD project co-financed by the European Community's 7th Framework Programme (Grant agreement 262902)
Start date 1 October 2010 / duration 3 years
www.sirius-gmes.es

IRM
INTEGRATED RESOURCES MANAGEMENT
IRMCo has 20 years experience in environmental resources management & specialises in public participatory approaches. In SIRIUS we conducted the PPGIS practice and launched a PPGIS capacity building programme for the 8 pilot areas.
www.environmentalmalta.com