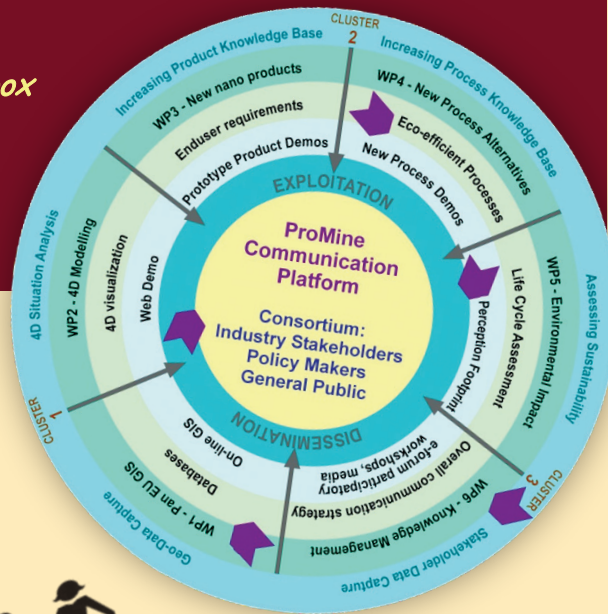




Communication
March 2013

Factsheet presenting
IRMC's communication toolbox
for knowledge management
throughout
the ProMine project



Tools & techniques for knowledge
capture, integration & distribution

The ProMine Spiral is propelling
the project forward... weaving
through the work packages...
all converging towards the
ProMine Communication Platform



Exchanging
knowledge &
integrating insights
at **roundtable
sessions**

Roundtables
promote
equality:
all statements
carry equal
weight

Speed geeking:



a participatory process
to quickly view presentations
within a fixed period
of time

"Time's up!
Move on to
the next
station"



© Edward de Bono's
6 Thinking Hats



Democracy wall:
an opportunity to
say what you think

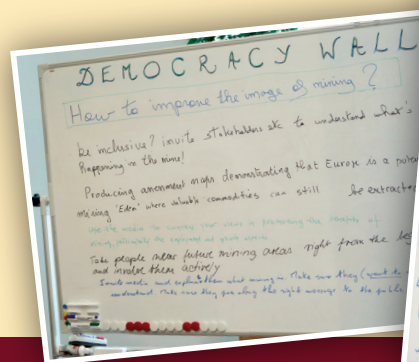
How can we
improve the
image of mining?

GOOD PR

Be transparent, communicate
to the public in proper
time. Provide guarantees for
an open profile and corporate
responsibility

Do a guide of what miners are used
for - eg: get a big mobile phone company
to sponsor an ad saying what is need
to enable mines in the modern world

Make films to be public
on clean mines in
Europe and elsewhere
Make a large diffusion
in media



Which 'thinking hat'?
Reaching decisions
based on a variety
of perspectives



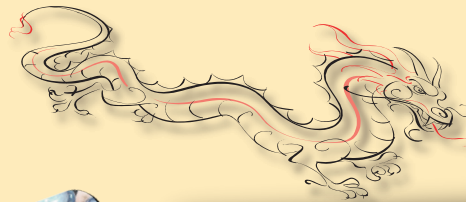
ProMine – Communication

More information can be found on promine.gtk.fi

Spreading ProMine knowledge

Networking & exchanging experiences & ideas at the **Mineral Marketplace**

ProMine achievements under the spotlight



Greetings from the **Green Innovation Expo** in Tokyo, Japan
We had 9,000 visitors!



Creating new **business opportunities**



Recording the **ProMine Stories**



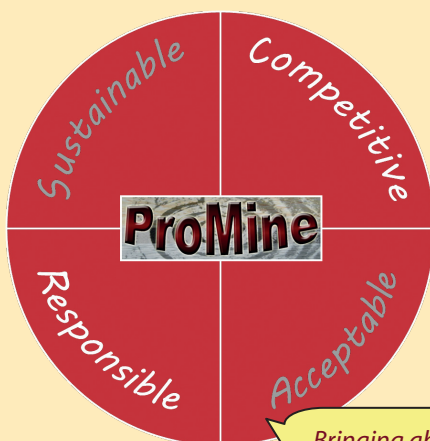
>> www.youtube.com/ProMineStory <<



Developing **promotional materials** to convey ProMine results



The ProMine Message: recommendations for the mining industry



Bringing about a **paradigm shift**

ProMine Partners



GTK, GEOLOGIAN TUTKIMUSKESKUS
PMO, PYHÄSALMI MINE OY
VTT, TEKNOLOGIAN TUTKIMUSKESKUS VTT
MIRKA, KWH-MIRKA



BOLIDEN, BOLIDEN MINERAL AB
KEMAKTA, KEMAKTA KONSULT AB
LTU, LULEÅ TEKNISKA UNIVERSITET



CUPRUM, KGHM CUPRUM SP ZOO
ECOREN, KGHM ECOREN S.A.
IMN, INSTYTUT METALI NIEŻELAZNYCH



GEOS, G.E.O.S. INGENIEURGESELLSCHAFT MBH
TU BAF, TECHNISCHE UNIVERSITÄT BERGAKADEMIE FREIBERG
WOLA, WOLA CHEMISCH-TECHNISCHE ERZEUGNISSE GMBH



HG, HELLAS GOLD S.A.
IGME GR, ETHNIKO KENTRO VIOSIMIS KAI AEIFOROU ANAPTYXIS
GM, ELLINIKI LEFKOLITHI ANONYMOS METALLEFTIKI VIOMIHANIKI NAFTILIAKI KAI EMPORIKI ETERIA



BRGM, BUREAU DE RECHERCHES GÉOLOGIQUES ET MINIÈRES
UL, UNIVERSITÉ DE LORRAINE
MRM, MILTON ROY MIXING SA
AL, L'AIR LIQUIDE SA



IGME ES, INSTITUTO GEOLÓGICO Y MINERO DE ESPAÑA



AGCMP, AGC MINAS DE PORTUGAL UNIPESSOAL LIMITADA
LNEG, LABORATÓRIO NACIONAL DE ENERGIA E GEOLOGIA I.P.



SELOR, SELOR EEIG
TU/e, TECHNISCHE UNIVERSITEIT EINDHOVEN
CALDURAN, CALDURAN KALKZANDSTEEN BV
KB, KIJLSTRA BETONMORTEL BV



UNI WAR, THE UNIVERSITY OF WARWICK
BANGOR, BANGOR UNIVERSITY



IRMCo, INTEGRATED RESOURCES MANAGEMENT (IRM) COMPANY LIMITED